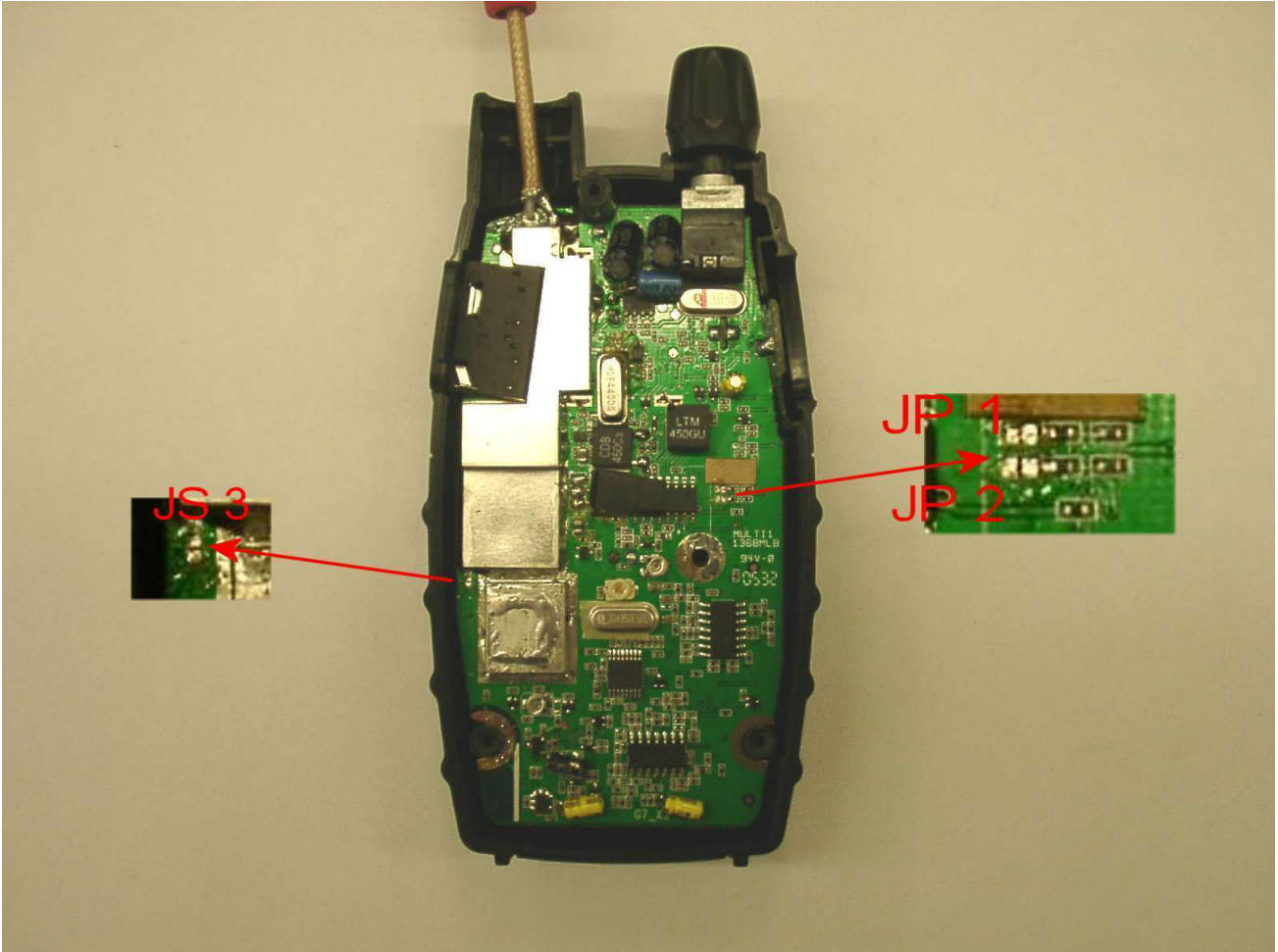
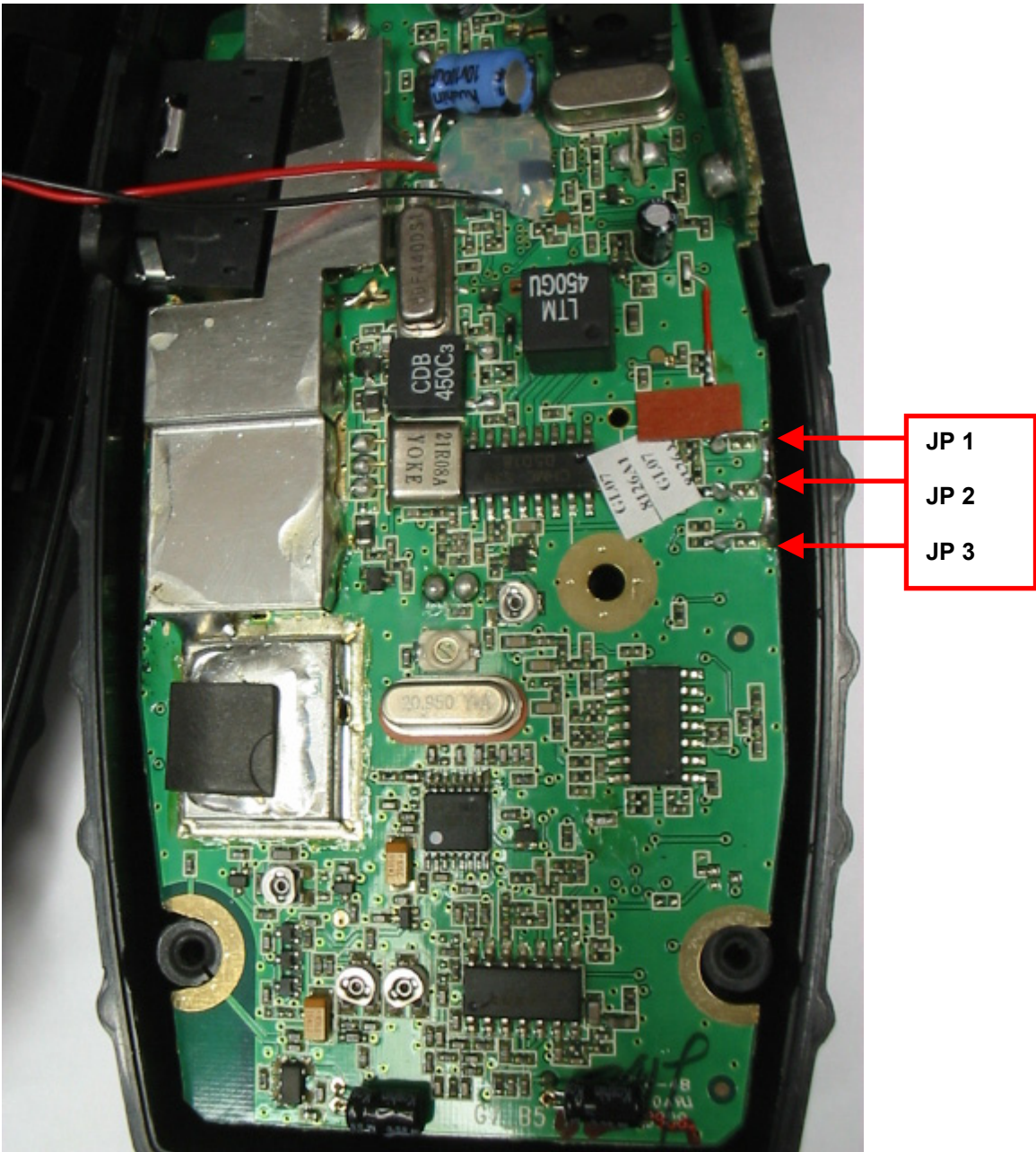


POWER OUTPUT AND BAND SETTING ON MIDLAND G7
Not legal for use in RSA

OLD Midland G7 XTR



New Upgraded Midland G7 XTR



English:

Remove the screw side package batteries, open the radio and look for the jumper (like above picture), follow below your configuration:

JP1	JP2	
0	0	LPD 69 CH only LO power
0	1	PMR 8 CH(HI/LO power) + LPD 69 CH (only LO power) DEFAULT SETTING
1	0	PMR 8 (HI/LO power)
1	1	PMR 8 CH(HI/LO power) + LPD 69 CH(HI/LO power)

NOTE: JS3 closed (default setting) the radio transmits with high power of 500 mW and low power 10 mW, in PMR channels, while LPD channels to 10 mW).

1 = open

0 = close

If you open JS3 you have the modify of power output:

LPD Band

HI power 3 Watt

LO power 0.500 mW

PMR Band

HI power 3 Watt

LO power 1.5 Watt

Attention: if you find trouble to close perfectly the chassis (near to antenna) is sufficient remove a little bit the plastic like below pictures.

BEFORE



AFTER

